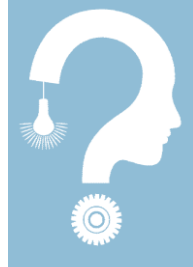


PSY 310 – 2024 Spring

Cognitive Processes



Instructor Email

Olesya Blazhenkova
olesya.blazhenkova@sabanciuniv.edu

Class Schedule

Wednesday	11:40 am - 12:30 pm	W	FASS 1001-1001A
Thursday	8:40 am - 10:30 am	R	FASS 1001-1001A

TAs

İrem Küsmüş irem.kusmus@sabanciuniv.edu

Muhammed Ali Yılmaztekin ali.yilmaztekin@sabanciuniv.edu

Office Hours

By appointment (email me before)

Course Description

Cognitive psychology is the study of the human mind and how it works: how we perceive, remember, and reason. In this course, you will learn how human thought processes are organized, how they affect our everyday behavior, and what are their underlying brain mechanisms. Topics include but are not limited to perception, attention, memory, imagery, language, expertise, problem solving, and creativity. This course will present an overview of these topics, focusing on understanding major theories, research findings, and their practical applications.

At the end of this course, you should be able to:

- demonstrate the knowledge of the key concepts in cognitive psychology
- use cognitive psychology principles in understanding human behavior

Course Structure

Modules

Course is organized in 3 modules with a separate exam at the end of each module.

Readings and other resources

The learning resources will be shared via sucourse. The recommended (not required) textbook is “Cognitive Psychology: Connecting Mind, Research and Everyday Experience” by Goldstein, E. Bruce.

In-Class Demonstrations & Experiments

Lectures will be supplemented by demonstrations of cognitive tests and experiments.

Workload and Evaluation

86 % Exams

There will be 3 exams in this course. Each exam will involve a mix of multiple choice and open-ended questions, covering materials from lectures, assignments, and presented papers.

Exams 1, 2 and 3 will make 32%, 27%, and 27% of your grade. There will be no final exam.

Students who fail to show up for any of the exams indicated in the Syllabus without a valid excuse and not taking the make-up examinations for such exams will receive N/A as their final grade. Make-up policy is strict. If you have an official excuse (e.g., medical) for missing an exam, present the report within a week after the exam. The format of make-up exams or assignments may or may not match the original exam. All make-ups are given at the end of the semester (the date TBD).

7 % Presentation

Each student is required to make one 5-min presentation on a topic related to the course materials. The papers for presentations will be posted.

7 % Last week assignment

This assignment will be given during the last week of classes.

Research Participation (up to 5 bonus points = 10 Sona research points):

Students can optionally serve as participants in research that is run by Sabanci University researchers. By participating in research, you can get extra points. For this course, you will be able to earn up to 5 bonus points (1 research point equals ~ 30 minutes of research participation). 10 sona research points (10 RPs) will be converted to 5 bonus points added to your overall total at the end of the semester. More information on the available research projects will be provided during the semester. You will be able to sign up for the experiments and get your research participation points through the online Sona system at <http://sabanciuniv.sona-systems.com>. Please, carefully read the Guide for Students: Sabanci University Experiment Credits System (Sona).

Grading Scale

Conversion to letter grades

A	93-100
A-	86-92
B+	80-85
B	75-79
B-	70-74
C+	65-69
C	60-64
C-	55-59
D+	50-54
D	45-49
F	0-44

Academic Integrity

It is the student's responsibility to be familiar with Sabanci University's policies on academic integrity, cheating and plagiarism. The assignments and exams you complete for this course should be the results of your own work and reflect your own understanding of the material. Scholastic dishonesty of any kind will not be tolerated.

Course Schedule

Week 1 (15 February 2024)	Introduction to Science of Cognition
Week 2 (21 and 22 February)	Introduction cont. Attention
Week 3 (28 and 29 February)	Attention and Perception
Week 4 (6 and 7 March)	Perception
Week 5 (13 and 14 March)	<i>Review + EXAM 1</i>
Week 6 (20 and 21 March)	Perception and Imagery
Week 7 (27 and 28 March)	Imagery
Week 8 (3 and 4 April)	Imagery and Memory
Week 9 (10 and 11 April)	<i>SPRING BREAK</i>
Week 10 (17 and 18 April)	<i>Review + EXAM 2</i>
Week 11 (24 and 25 April)	Memory
Week 12 (1 and 2 May)	Language
Week 13 (8 and 9 May)	Problem Solving & Creativity
Week 14 (15 and 16 May)	<i>Review + EXAM 3</i>
Week 15 (22 and 23 May)	From face perception to social cognition
Week 16 (29 May)	<i>Assignment</i>

Note: Course content, requirements and policies are subject to change at the discretion of the instructor. Changes will be posted on SU COURSE.